

3 What if my children have special needs?

Upon enrolment our staff will be happy to discuss any additional care needs your children may have.



4 What qualifications do staff have?

Staff will have child care, recreation, teaching or related qualifications and experience with school age children



5 Is there help with the cost of child care?

To assist low and middle income families the Commonwealth Government has assistance available to help with the cost of child care. Further assistance is also available to students and trainees.

If you have any questions please contact Glenda or Sarah at Weir Outside School Hours Care

Ph: 4773 6033
Mobile: 0417 609 682
592 Ross River Road, Kirwan QLD 4817
Email: wieroshc@bigpond.com



Weir Outside
School Hours Care
(OSHC)

Quality Child Care for
School Age Children

Hours of Operation

Before School Care 6:30 – 8:45am
After School Care 2:45 – 6:00pm
Vacation Care 7:00am – 6:00pm
Closed Public Holidays

1 Weir Outside School Hours Care

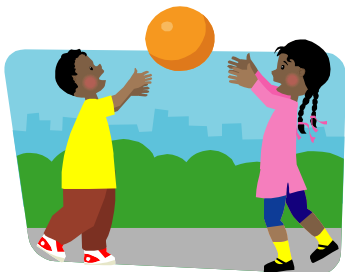
Our aim is to provide quality care at an affordable cost to families in a safe, caring and friendly atmosphere in which parents and children feel comfortable and content. By providing a positive, warm, creative, stimulating and safe environment, children will learn and grow while feeling safe and secure.

Further, by providing developmentally appropriate programs children are encouraged to

- Develop their own ideas and thoughts, to problem solving
- And to be independent while at the same time having the reassuring presence of skilled carers to guide them.

The importance of each child as an individual is valued highly.

High importance is placed on promoting and developing positive social attitudes and skills amongst all children in our care.



2 What will my children be doing in Outside School Hours Care?

Before School Program

A nutritious breakfast is provided at no extra cost and generally quiet activities are provided including toys, construction sets, drawing and electronics such as iPads, Wii games and computers.



After School Program

Afternoon Tea is provided and this always includes pieces of fruit. Planned activities are provided that offer a choice between outdoor and indoor settings. Outdoors, various games and sports are organised and indoor planning may include art and craft, music and movement or science activities. At about 4:30 free play inside and homework time will start. Self-select play includes Home Corner and dress-ups, construction sets like Lego, Mobilo and Klikko, books, toys, music, drawing, colouring as well as electronics which are limited to 15 minute turns.



Vacation Care

In the holidays we offer similar activities to After School Care but will also include excursions to places such as parks, theatres, museums and cinemas. Swimming, Bowling, Mini Golf and Launch Zone are popular choices. Incursions from cultural groups or art and craft experts may be booked too. Programs are available in week 8 of the term.

